

24 April 2007

NEW!

xpstorm v10.52

for urban drainage design

XP Software is pleased to announce our newest release of **xpstorm**. Version 10.52 adds over 20 new enhancements to this already powerful software for stormwater design and analysis. With **xpstorm**, you can design and analyze pipe systems, design detention basins and route storms and pollutants through the system. Start with our basic package and build from there with our affordable add-on modules. These modules include DTM, GIS, AutoCAD, Wastewater, Water Quality Analysis, Pumps and Orifices, 2D, Real Time Control and XP Viewer.

Some of the newest enhancements include:

- Directly import node/link elements from ESRI Shape files and MapInfo Interchange files
- Added 2D water elevation results at points and cross-sections
- Gauged data now supports user defined files
- Export to EPA SWMM5 database as an optional module
- Allow printing of network view with AutoCAD drawings as sheet styles
- GIS import supports multi-conduit, pump, weir, orifice, other diversion data
- Convert units of imported data from external databases
- Draw sediment depths in cross-section and long-section views

**some new functions will require add-on modules*

Be sure to visit [this link](#) to obtain an evaluation copy of **xpstorm**. If you have an older version of **xpstorm** and would like the latest, please contact your local sales office. For pricing, call or email one of our representatives today. See below for contact details.

Model with Confidence using xpstorm v10.52.

[back to top](#)

xpswmm converter for SWMM5

Per client requests, we are pleased to offer a new add-on module for **xpswmm** and **xpstorm** v10.5 that will enable our clients to export their models to an EPA SWMM5 data file (.inp).

While we have made every attempt to be compatible with this public domain software, XP Software customers should be aware that the exported SWMM5 model may not be identical to the original xpswmm model.

For example, you may see discrepancies between the two models if you use:

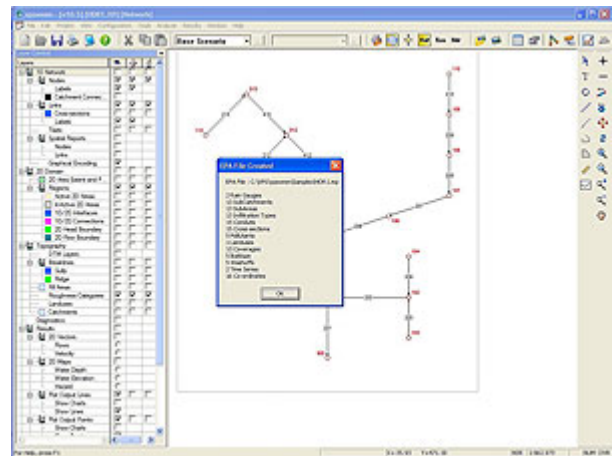
- any hydrologic, infiltration or inlet capacity methods not supported by SWMM5
- real time control to regulate flow in a conduit
- true terrain data to model ponding and surface storage

However, all basic essential elements of your model can be exported, allowing you to utilize the EPA SWMM5 interface to edit and review your model.

This add-on module is not compatible with versions prior to 10.5.

Contact your local representative or sales@xpsoftware.com for more information.

back to top



Home

Search | Service Requestor

Forums | Calendars | Albums | Language

You are logged in as a guest. (logon | register)

► General discussion

	Forum name	Threads	Messages	Last post
XP	Welcome to XP Software Introduction to the XP Software company Moderators: XP Staff	2	5	Upcoming training opportunities > 4/19/2007 12:02 PM by Fenner
XP	Products & Services The latest news and information about our software products, training programs and services. Moderators: XP Staff	4	4	Workshops > 11/30/2006 1:34 PM by Fenner

► Support

	Forum name	Threads	Messages	Last post
XP	XP Users Forum Exchange modelling tips & tricks with other modelers. Moderators: XP Staff	9	17	Re: Sewer Overflow > 4/18/2007 1:39 PM by Tony

The XP Users Forum is a new communication platform for the world-wide XP Software community. Users are invited to take advantage of this free new resource designed to help customers share information, contribute tips, tricks and breakthroughs in water resources engineering, or anything relevant to the modeling of collection and conveyance networks. Forum users may initiate and join in discussions about any issue related to their use of XP Software modeling products, such as the customization of XP Software applications for the unique features of their collection and conveyance networks or simply how to model a better debris trap. When you consider the brain power of all the XP Software users world-wide, there is no limit to the wealth of information that can be shared and gained using this new resource.

The **XP Users Forum** is easy to use and is available to any current user of XP Software applications. Here's how the site is organized:

FORUMS are discussions are organized into three categories:

- **Welcome** provides an overview to new visitors. Look here for news of upcoming events and announcements of upgrades and new products. Also links to web sites of interest will be provided. Posts are restricted to XP staff members.
- **Products & Services** is for general discussions related to XP Software's products and services. Any registered user may post a question here.
- **XP Users Forum** is for discussions related to how to build and run your model as well as interpret and present your results. This forum is open to users of XP Software products.

CALENDAR provides a quick view of upcoming XP Software workshops, exhibits and product releases.

ALBUMS is a place to upload photos of flood events, interesting hydraulic structures or social events of interest.

Membership in the XP Users Forum

Three levels of membership to the forum are provided.

1. *Guest* status is available to anyone. Guests may view the entire contents but may not post new topics for discussion.
2. *Registered User* status is available to any current XP Software user by answering a few questions in the online form. Registered users will then be approved and activated by the forum moderator. Registered users may post discussion topics in the Software Products forum.
3. *XP Software Users* may join discussions in the XP Users Forum. To obtain this user status,

registered users may request an upgrade to this level by sending a request to the XP Users Forum moderator.

Remember that the **XP Users Forum** is not official XP Software Technical Support. To receive technical support by our global staff of engineers, users with current support and service contracts should still login to our online **Service Requestor**.

This is your forum! XP Software is excited to offer this additional service to our customers at no additional cost. Please visit the **XP Users Forum** today to post your thoughts and make a contribution to the discussions. Click [here](#) to begin!

[back to top](#)



Colby T. Manwaring, P.E.: General Manager

Colby is a licensed water resource engineer with over a decade of experience in computational hydraulics and hydrology. He began his career as a software developer in the Environmental Modeling Research Laboratory of Brigham Young University, developing hydrologic modeling applications and researching automated methods of watershed modeling. After several years as a developer, Colby moved to Environmental Modeling Systems, Inc. and Scientific Software Group as Vice President. While overseeing sales and marketing efforts, he continued work in the area of hydrologic and hydraulic modeling – teaching professional level courses worldwide and managing custom software development for several governmental agencies and private firms. In joining XP Software as its new General Manager, Colby plans to expand the international reach of our company and broaden the software tools to include more hydrologic and hydraulic modeling options.

Fenner C. Brownell: Vice President of North American Operations/Executive Manager - Sales and Marketing

Fenner will oversee the operation of the North American profit center and will manage both the National and International Sales and Marketing Departments. In coordination with the VP's of both the International and Australian/Pacific Operations, Fenner looks to build on the impressive growth that XP Software has experienced in the last few years. He joins XP Software after working in the H&H industry for the last six years with Haestad Methods and Bentley Systems. Prior to his H&H experience, he worked in sales and marketing roles for companies providing inspection and measurement systems for the industrial, high tech and medical markets. Fenner recently moved to the Portland area after living in the northeastern United States for many years. He brings his wife Sue and two of his four children with him. He can be reached at the Portland office.

[back to top](#)

training opportunities

Our public workshop training opportunities offer a wealth of information for both novice and expert alike. First-time users will learn everything necessary to start on the right foot with real-time examples and real world knowledge. Experienced users will be introduced to new features and functions released in recent months, and will have the opportunity to refresh their skills. Product vouchers are provided, and continuing education credits are available in the U.S. and Canada. Be sure to join us at one or more of our upcoming training venues and you will become yet another satisfied client who can

Model With Confidence.

(Find information as it is made available on our website, [HERE](#))



Columbus, OH, USA

Sanitary and Combined Sewer Modeling with **xpswmm** and **xpstorm**

26 & 27 April, 2007



Sydney, NSW, Australia

Stormwater and Wastewater Modeling with **xpswmm** and **xpstorm**

1, 2 & 3 May 2007



Seattle, WA, USA

Simulation of Flooding in 1D and 1D/2D with **xpswmm** and **xpstorm**

23, 24 & 25 May 2007



Perth, WA, Australia

Stormwater and Wastewater Modeling with **xpswmm** and **xpstorm**

12, 13 & 14 June 2007



Kansas City, MO, USA

Sanitary Sewer Modeling and Prediction of Overflows with **xpswmm**

14 & 15 June 2007



Auckland, New Zealand

Stormwater and Wastewater Modeling with **xpswmm** and **xpstorm**

24, 25 & 26 July 2007

Buffalo, NY, USA

TBD, August 2007

Calgary, AB, Canada

TBD, September 2007

Phoenix, AZ, USA

TBD, October 2007

Baton Rouge, LA, USA

TBD, November 2007

Portland, OR, USA

TBD, December 2007

Additional training services include onsite training and internet based training. Call our sales office for details on these or any other workshop.

YOU ARE ALSO WELCOME TO VISIT US AT A TRADE SHOW!

It is full year of trade shows for XP Software! If you are attending one or more of the following trade shows, stop by our booth, meet our staff and get a demonstration of our latest software.

WEF Collections, 14 & 15 May

ASFPM Conference, 5-7 June

Booth #404
Portland, OR, USA

NSW SIA Conference, 19-22 June
Wollongong, NSW, Australia

JSWA Sewage Works Exhibition, 24-27 July
Tokyo, Japan

Norfolk, VA, USA

Stormcon, 20-23 August
Phoenix, AZ, USA

WEFTEC, 15-17 October
Booth #6411, Hall B
San Diego, CA, USA

[back to top](#)

CONTACT XP SOFTWARE:

NEW ADDRESS!

North American Office:
XP Software, Inc.
700 NE Multnomah St., Suite 230
Portland, OR 97232

Phone US Order Hotline
1-888-554-5022

Fax Order Hotline
1-888-554-5122

sales@xpsoftware.com

Australia, Head Office:
XP Software Pty Ltd
8-10 Purdue Street
Belconnen ACT 2617

Postal Address:
PO Box 3064
Belconnen ACT 2616

Phone Australian Order Hotline
(02) 6253 1844

Fax Order Hotline
(02) 6253 1847

sales@xpsoftware.com.au