

A NEW SERVICE FOR OUR CUSTOMERS:

13 October 2006

XP Software announces the addition of the XP User's Forum, designed to provide easy access to helpful user information.

NEW XP USER'S FORUM!

Home | Search | New Threads | Service Requestor | Forums | Calendars | Albums | Quotes | Control Panel

Welcome, Nicole (Logoff). You have 0 messages in your inbox (0 new).
There is 1 other user online (0 registered, 1 guest).

► General discussion

	Forum name	Threads	Messages	Last post
XP	Welcome Introduction to XP software Moderators: XP Staff	1	2	☑ Anaheim Workshop with special offer > 9/29/2006 5:03 PM by Fenner
XP	Software Products General discussion of our software products, training programs and services Moderators: XP Staff	2	2	☑ Your Speciality > 8/29/2006 3:18 PM by Nicole

► Support

	Forum name	Threads	Messages	Last post
XP	XP User's Forum For all technical questions Moderators: XP Staff	1	1	☑ Welcome > 8/23/2006 11:18 AM by Tom

The XP Users Forum is a new communication platform for the world-wide XP Software community. Users are invited to take advantage of this free new resource designed to help customers share information, contribute tips, tricks and breakthroughs in water resources engineering, or anything relevant to the modeling of collection and conveyance networks. Forum users may initiate and join in discussions about any issues related to their use of XP Software modeling products, such as the customization of XP Software applications for the unique features of their collection and conveyance networks or simply how to model a better debris trap. When you consider the brain power of all the XP Software users world-wide, there really is no limit to the wealth of information that can be shared and gained using this new resource.

The **XP User's Forum** is easy to use and is available to any current user of XP Software applications. Here's how the site is organized:

Hydrodynamic Modeling in
2Dimensions
with **xpswmm**
and **xpstorm**

Take the next step with the newest technology to model flow patterns and flooding impact with **xpswmm** and **xpstorm 2D**.*

Traditional **xpswmm** and **xpstorm** 1D models can be enhanced with XP Software's new **2D** add-on module.

Greater accuracy and detail of flooding events can be mapped and output graphically using a 2D model, especially when it is dynamically linked to the 1D network. With **xpswmm** and **xpstorm** version 10 and the **2D** add-on module, you can now create more accurate results and communicate them more easily than ever before.

Call us for more information or a demo:

USA & Canada:
1-888-554-5022
sales@xpsoftware.com

Head Office, Australia:
(02) 6253 1844
sales@xpsoftware.com.au

*Requires purchase of 2D module for **xpswmm** and **xpstorm** version 10

FORUMS. Discussions are organized into three categories:

- **Welcome** provides an overview to new visitors. Look here for news of upcoming events and announcements of upgrades and new products. Also links to web sites of interest will be provided. Posts are restricted to XP staff members.
- **Software Products** is for general discussions related to XP Software's products and services. Any registered user may post a question here.
- **Technical Support** is for discussions related to how to build and run your model as well as interpret and present your results. This forum is open to registered users of XP Software products.

CALENDAR provides a quick view of upcoming XP Software workshops, exhibits and product releases.

ALBUMS. Upload photos of flood events, interesting hydraulic structures or social events of interest.

Membership in the XP User's Forum

Three levels of membership to the forum are provided.

1. *Guest* status is available to anyone. Guests may view the entire contents but may not post new topics for discussion.
2. *Registered User* status is available to any current XP Software user by answering a few questions in the online form. Registered users will then be approved and activated by the forum moderator. Registered users may post discussion topics in the Software Products forum.
3. *XP Software Users* may join discussions in the Technical Support forum. To obtain this user status, registered users may request an upgrade to this level by sending a request to the XP Users Forum moderator.

This is your forum! XP Software is excited to offer this additional support service to our customers at no additional cost. Please visit the **XP User's Forum** today to post your thoughts and make a contribution to the discussions. Click [here](#) to begin!



ACT Chief Minister's
EXPORT AWARDS

blue ribbon year for xp software



We are pleased to announce our recent acceptance of a **2006 ACT Chief Ministers Export Award**. The award was presented to XP Software Director, Dr. Brett C. Phillips, and VP of Software Development, Sudesh Mudaliar, at a luncheon held in the Canberra Hyatt Hotel on 15 September, 2006.

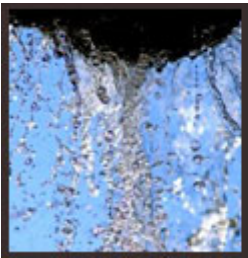
This award was given for outstanding export achievement in the field of information and communication products, technology or services.

The **Australian Export Awards** are Australia's premier awards, and are devoted exclusively to recognizing excellence in exporting achievement. These awards are highly prized, and we are honored to be one of the recipients of this prestigious award in 2006.

XP Software also received the Award for Stormwater Software Development from the **Stormwater Industry Association of New South Wales** (Australia). The award was one of five received by Cardno and its subsidiaries at the dinner held at Sydney Olympic Park in June. It was granted for XP's range of software products that support management in Australia and overseas.

Stop Press: Due to XP Software's winning of the New South Wales Stormwater Industry Association we automatically were entered into the National Awards. We are pleased to announce that XP Software won the **National Award**. The National Award was accepted in Perth, Australia by XP Software's President, Mr Geoff Thompson.

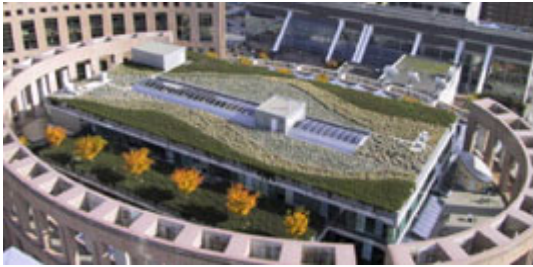
[back to top](#)



xpsoftware incorporates Sacramento Methodologies into xpswmm and xpstorm

In a project started in June, 2006, XP Software, working with the Sacramento County Department of Public Works, is building into **xpswmm** and **xpstorm** the SAC/NOLTE Methodology used exclusively for all collection system modeling in the Sacramento County area. Incorporating this regional methodology into **xpswmm** and **xpstorm** provides greater ease-of-use to engineers as well as time-saving functionality and tools.

Similar development projects have been conducted by XP Software in the past to include other regional methodologies in **xpswmm** and **xpstorm**, demonstrating XP Software's long-term commitment to the specific needs of municipalities and governmental agencies. Other examples include the Colorado Urban Hydrograph, Santa Barbara Methodology and the Los Angeles County Modified Rational Method.



xpswmm helps evaluate Green Roof

A variety of Low Impact Development (LID) technologies are being implemented to mitigate the impact of development on stormwater flows and quality in urban areas. One concept is a green roof where a flat building top is covered with soil and a vegetative community is maintained. While designs for these Best Management Practices (BMPs) are available, there is a lack of quantitative information on their long term performance. This article summarizes efforts to develop such data.

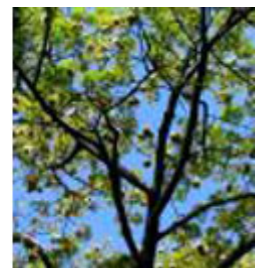
Public Works and Government Services Canada (PWGSC) initiated a study to add to the pool of knowledge on BMP and LID methods. PWGSC partnered with **Kerr Wood Leidal Associates Ltd.** (KWL) to conduct a year long monitoring project on the green roof constructed on top of the Vancouver (British Columbia, Canada) Public Library. The purpose was to assess the roof's performance during the rain and dry seasons. Data on air and runoff temperature, soil moisture, humidity, precipitation, wind speed and direction, gust speed and solar radiation were collected. This information was incorporated into an **xpswmm** model.

The calibrated model was used to assess the performance of the green roof and to compare runoff quantities to simulated values from a traditional roof and the natural condition. During the summer when the roof is dryer and the rainfall events typically smaller, peak flows reduced in excess of 80%. For the winter events, the reduction in peak flow decrease with the sized of the storm event. The green roof reduced runoff by approximately 50% for smaller winter events and by less than 55% for the larger more severe events. This is to be expected as these types of LID techniques are designed to reduce flows during smaller events.

xpswmm and **xpstorm** models can simulate the performance of LID technologies and practices and estimate the increased environmental quality resulting from their implementation. For additional information, contact XP Software Technical Support.



Low Impact Development Water Sensitive Urban Design with **xpswmm** or **xpstorm**



What is LID/WSUD?

In the U.S. it is called Low Impact Development, which originated in Prince George's County, Maryland in the mid-1980s to help address stormwater management issues. Instead of conveying and managing or treating stormwater in large, costly treatment facilities, LID addresses

stormwater using small, cost-effective landscape features located at the lot level.

In Australia, the corporate home of XP Software, it is called Water Sensitive Urban Design, which focuses even tighter on the storage, reuse and treatment of water in urban developments. The basic tenet of WSUD is that water is a resource to be used as efficiently as possible. So instead of simply removing water from a site and creating water quality and quantity problems downstream, water should be stored, reused and treated incrementally at every possible opportunity. This enables the creation of sustainable developments.

These techniques are gaining great momentum in land development, as the need for clean water becomes a powerful factor in every healthy environment, in addition to the increased regulatory requirements for water quality.

How Can XP Software Help You with LID/WSUD?

Using **xpswmm** or **xpstorm** to model the existing watershed system prior to development provides a baseline of the stormwater runoff in the area to be developed. Then, as LID/WSUD practices are incorporated in your site design, you can test different scenarios that will manage the stormwater appropriately with the goal of making no impact on the original watershed system.

In the hydrology mode of **xpswmm** and **xpstorm**, pollutant removal and tracking through the system can be included, as well as storage effects and BMPs such as rainwater tanks, swales and green roofs. In the hydraulics mode, larger facilities can be included such as wetlands, detention ponds and underground reservoirs. Using the Scenario Manager in either **xpswmm** or **xpstorm**, you can easily test different methods for stormwater management.

Additional Information and Helpful Links

If you would like more information about LID/WSUD, here are some links to industry organizations and groups.

<http://www.lowimpactdevelopment.org/>
<http://www.epa.gov/nps/lid/>
<http://www.nrdc.org/water/pollution/storm/chap12.asp>
<http://www.stormwatercenter.net/>
<http://www.rainkc.com/home/index.asp>
<http://www.lid-stormwater.net/>
<http://www.wsud.org/>
<http://www.stormwater.asn.au/>
<http://www.sca.nsw.gov.au/>
<http://wsud.melbournewater.com.au/>

xpssoftware

training opportunities

The quickest way to learn how to build models is by attending one of our workshops. Experienced users can refresh their skills and learn how to use the latest features. With the release of **xpswmm** and **xpstorm** version 10, the new add-on modules that are now available and the new possibilities for modeling in **xpswmm** and **xpstorm**, our public workshop training opportunities are a great source of information. Join us at one of our upcoming training workshops so that you can model with confidence!

(Find information as it is made available on our website, [HERE](#))

Charlotte, NC, USA

11, 12 & 13 October 2006

Perth, WA, Australia

14, 15 & 16 November, 2006

Anaheim, CA, USA

16 & 17 November

Additional training services include onsite training and internet based training. Call our sales office for details on these or any other workshop.

You are also welcome to visit us at a Tradeshow

It has been a full year of tradeshow for XP Software! If you are attending the following trade show, stop by our booth, meet our staff and get a demo of our latest software.

WEFTEC

Booth #4012, Hall C

21-25 October, Dallas, Texas, USA

CONTACT XP SOFTWARE:

North American Office:

XP Software, Inc.
2000 42nd Ave #214
Portland, OR 97213

Phone US Order Hotline
1-888-554-5022

Fax Order Hotline
1-888-554-5122

sales@xpssoftware.com

Australia, Head Office:

XP Software Pty Ltd
8-10 Purdue Street
Belconnen ACT 2617

Postal Address:
PO Box 3064
Belconnen ACT 2616

PH: (02) 6253 1844
FX: (02) 6253 1847

sales@xpssoftware.com.au